



## aimswebPlus:

Essential reading and math assessments for successful early intervention

---

**aimswebPlus™** provides benchmarking and progress monitoring for PreK–12 foundational reading and math skills, as well as screeners for dyslexia and behavior.

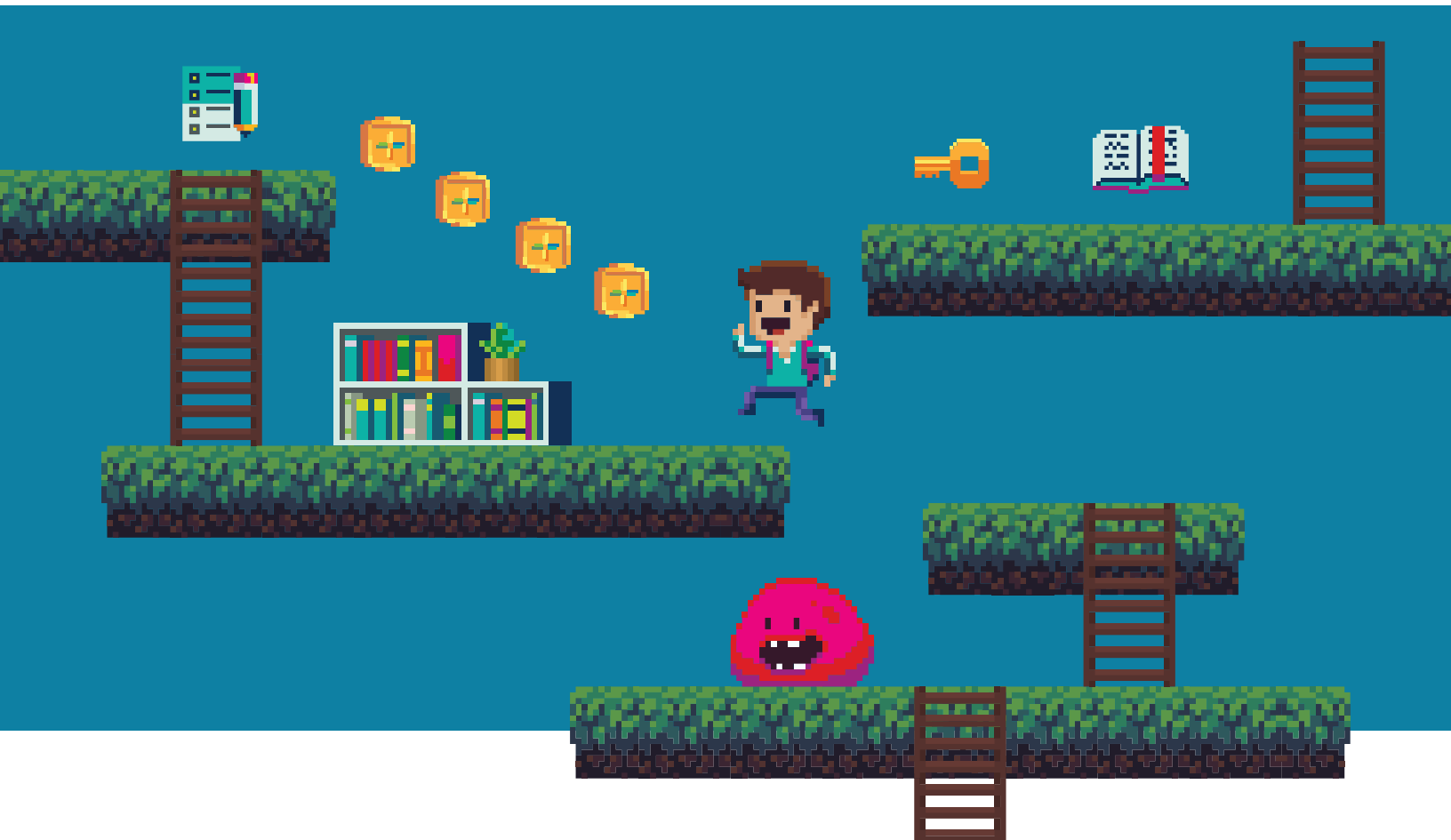
Using aimswebPlus, schools can now identify and group at-risk students early, monitor and report student progress, and predict performance on grade level expectations. aimswebPlus builds upon brief, valid, and reliable measures of foundational skills in reading and math by adding standards-based assessments useful for instructional planning. An intuitive user interface and immediate results help teachers to quickly target instruction and interventions and preserve classroom teaching time.

## Use aimswebPlus to help you:

- Benchmark and monitor students in one seamless system
- Uncover learning gaps faster and more accurately
- Track student progress for more effective instruction and interventions
- Meet accountability requirements

## Benefits of aimswebPlus:

- **Brief:** Most assessments take 1 to 4 minutes to complete.
- **Predictive:** Provides accurate predictions of reading and math achievement.
- **Sensitive:** Includes student Rate of Improvement (ROI) growth percentiles and summaries that allow schools to compare progress against similar students in a national sample.
- **Flexible:** Delivers strong benchmarking and progress monitoring robust enough to add a wide array of additional screeners and instructional supports.
- **Teacher-friendly:** Easy to administer and score by a wide range of education personnel.
- **Tested:** Content accurately measures reading and math skills with proven reliability, validity, and national norms.

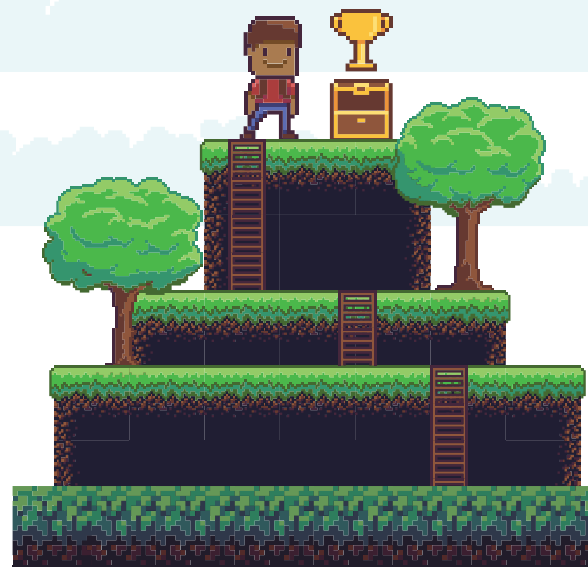


## aimswebPlus At-A-Glance:

- Universal screening, progress monitoring, and results reporting in one seamless system
- National norms for accurate performance comparisons
- Reports with Lexile® and Quantile® scores

Key measures in **Early Literacy and Reading, Early Numeracy and Math, Spanish Early Literacy and Reading, Spanish Early Numeracy and Math**, aimsweb classic measures, and add-ons.

[Learn more about our measures](#)



## Reports included:

- **Group reports:** Benchmark Distribution, Scores and Skills Plan, ROI Growth Norms, Tier Transition, Math Skills Analysis
- **Individual reports:** Individual Benchmark, Individual Monitoring, Scores Snapshot, Skills Plan–Reading, Skills Plan –Math, Individual Skills Analysis

[View our sample reports](#)

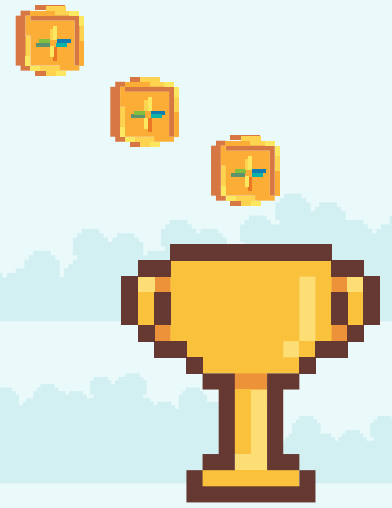
## Additional screeners for a whole-child view

These days, time is a commodity that feels almost tangible. In order to learn where your students are regarding their literacy, mental wellness, academics, and social-emotional skills, having everything you need to achieve a whole-child view right at your fingertips is not just convenient — it's a necessity!

Make data-driven decisions that ensure equity and inclusion for your diverse learners by addressing the whole child through the lens of your tiered systems of support for academics, behavior, and social-emotional learning. Adding these additional screeners to your aimswebPlus subscription will not only support the goals of your school/district, but it will also help you support the students whose unique strengths and needs are waiting to be discovered.

---

Meet the add-ons ready to help you meet the critical academic, behavioral, and social-emotional needs of your students.



## Literacy

- [Shaywitz DyslexiaScreen™](#): Identify students at risk for dyslexia and comply with screening mandates.
- [Dyslexia Probability Calculator™](#): Quantify the severity of dyslexia risk (free with Shaywitz DyslexiaScreen add-on).
- [Rapid Automatized Naming](#): Quickly measure rapid automatic naming for students in K–3.
- [WriteToLearn™](#): Further develop reading comprehension, expand vocabulary, build writing skills, and save time with automatic scoring!

## Behavior and social-emotional learning

- [BASC™-3 BESS](#): Determine behavioral and emotional strengths and weaknesses of all students.
- [SSIS™ SEL](#): Provide screening, diagnostic assessment, and intervention with this comprehensive, evidence-based, CASEL aligned social-emotional learning system.

Contact your rep or call 866-313-6194, Opt. 1 to order aimswebPlus or add additional screeners to your aimswebPlus subscription.

Learn more at [PearsonAssessments.com/aimswebPlus](https://PearsonAssessments.com/aimswebPlus).

866-313-6194 | [PearsonAssessments.com](https://PearsonAssessments.com)

Copyright © 2022 Pearson Education, Inc. or its affiliates. All rights reserved. Pearson, aimsweb, BASC, DyslexiaScreen, and WriteToLearn are trademarks, in the US and/or other countries, of Pearson plc. L2037 EL 09/22

